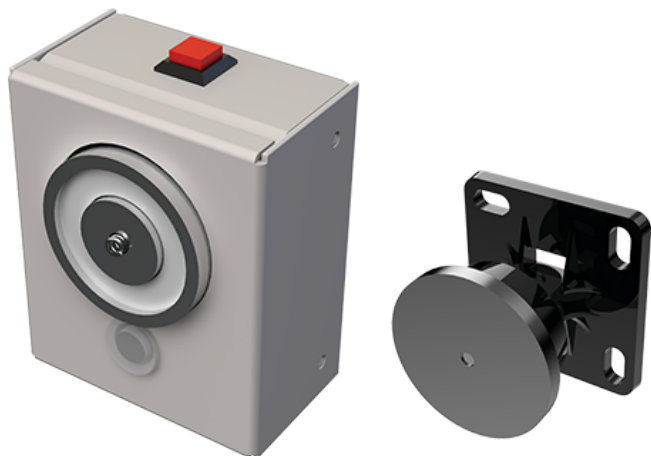




## FICHE PRODUIT - VMPO242/484M

Electromagnetic door holder surface bi-voltage wall mounted box 24-48V DC / 20-50 daN / EN1155



### Détails techniques

Holding force **20/50 daN**

Input voltage **24-48V DC**

Compliant with **EN 11-55**



Pour visualiser la fiche produit sur notre site internet, [cliquez-ici](#)

The Electro-Magnetic Door Holders VMPO242/484M are part of an effective fire protection system. They are suitable for the functionalities of swinging fire doors, fire/smoke compartments subject to fire regulations and as electromagnetic retainer devices. EN 1155 certified, they are intended for interior use and are designed to be integrated into public buildings or buildings meeting fire safety standards. French manufactured, they comply with the requirements of NF S 61937-1 and 61937-2 standards.

Mounted on stationary surface (wall-mounted), they magnetically hold the doors in open position by means of a counterplate fixed to them.

This dual-voltage model can be powered in 24 or 48V DC. It has been developed to operate with Safety Extra Low Voltage (SELV) and direct current (Vdc). It is producing a 20 daN holding force with 24V DC power supply or a 50 daN holding force with 48V DC power supply.

Release of fire doors can be triggered:

-Remotely by the fire alarm panel, which interrupts the power supply in the event of an alarm. Unlocked, these surface-mounted door holders instantly close the access, preventing the fire from spreading throughout the building. This fail-safe system helps to protect people.

-Manually by pressing a push-button (manual release switch), located directly on the casing from the door holder.

Return to « hold-open » position is achieved by returning the door to its initial position after having re-activated the power supply when necessary: in the absence of a fire alarm or power failure, the VMPO242/484M hold-open device remains locked and the fire door open.

The counterplate supplied with the magnet is an articulated version, offering optimum ease of installation and adjustment, to ensure perfect alignment between magnet and counterplate.

Made of ABS, Ø 50 mm.

Mounting can also be done using a complementary remote foot (see accessories for hold-open devices).

---

## Articles complémentaires



### SMSP200

Aluminium distance post + bracket (wall/floor/ceiling mounting) length: 200 mm



### SMSP400

Aluminium distance post + bracket (wall/floor/ceiling mounting) length: 400 mm